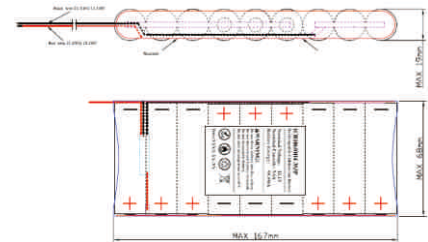


Rechargeable Lithium-ion Battery Pack

ICR18650H4-3S3P

Electrical Characteristics

Nominal Capacity	9000mAh (0.2C Discharge)
Minimum Capacity	8850mAh (0.2C Discharge)
Nominal Voltage	11.1V
Charge Cut-off Voltage	13.05V
Discharge Cut-off Voltage	9.0V
Internal Impedance	$\leq 250\text{m}\Omega$
Standard Charge Current	0.2C
Standard Discharge Current	0.2C
Weight	Appro. 435g
Rapid Charge Current	0.5C (CC/CV, 4500mA, 13.05V, 90mA)
Max Discharge Current	0.5C (Ambient temperature 25°C)
Standard Charge	Constant Current(CC) Charging at 0.2C to 13.05V Constant Voltage(CV) Charging at 13.05V to cut-off current $\leq 0.01\text{C}$
Standard Discharge	Constant Current (CC) Discharge at 0.2C to cut-off voltage of 9.0V
General cycle Life(25 \pm 2°C)	300times
Constant current 0.2C charge to 13.05V, then constant voltage charge to current declines to 0.01C, rest 0.5h, then constant current 0.2C discharge to 9.0V, rest 0.5h. Repeat above steps till continuously discharging capacity lower than 70% of the Initial Capacities of the Cells.	



Thickness: 19mm Width: 167mm Height: 68mm

Drawings just for reference, any special demands, please don't hesitate to contact us.

Terminal / Connector

Soldering tabs/wires/connectors
 (any special connector, please don't hesitate to contact us.)

Operating Temperature

Charge: 0 ~ 45°C
 Discharge: -20 ~ 60°C

Storage Temperature

During 1 month: -5 ~ 35°C
 During 6 months: 0 ~ 35°C

Note: Information above just for your reference, more details please contact Green Energy Battery Co., Ltd.

GREEN ENERGY BATTERY Co., Ltd. Website: www.gebc-energy.com E-mail: info@greenenergy-battery.com